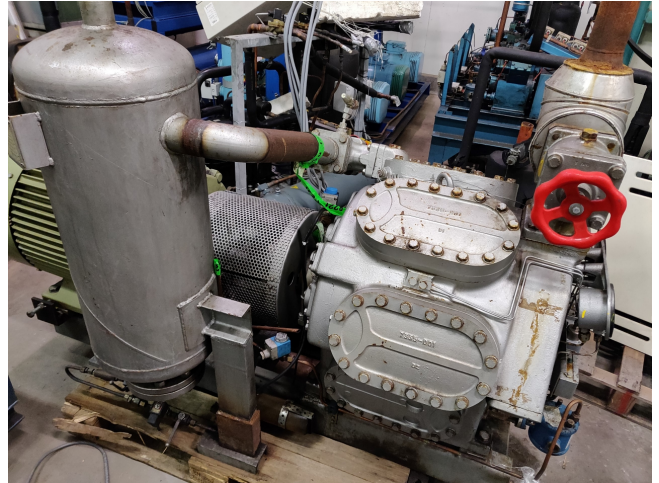


Sabroe SMC 108 S mk2 cool/freeze unit

Specifications

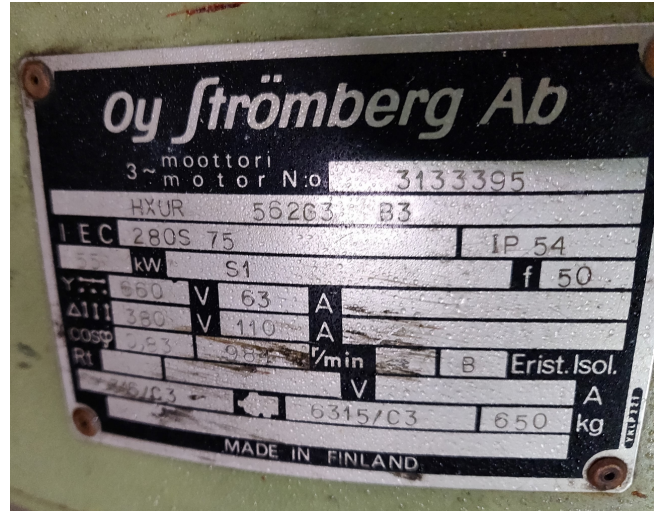
Marka	Sabroe
Typ	SMC 108 S mk2 cool/freeze unit
Czynnik chłodzący	NH 3 / Freon
kW at 0°C/+40°C	500
kW at -10°C/+40°C	330
kW at -40°C/+40°C	94
Silnik elektryczny Specs	55kW at 984 RPM
Podstawa na stalowej ramie	✓
Ciśnieniowe przełączniki bezpieczeństwa	✓
Wskaźniki ciśnienia	✓
Obiornik cieczy	✓
Poziom oleju w systemie	✓
m3 / h	303
Uwagi	330 kW at -10°C/+35°C // 94kW at -40°C/-10°C
Stock	1



Description

Used Sabroe SMC 108 S mk2 cool/freeze unit

Used JCI Sabroe SMC 108 S reciprocating compressor with Electromotor 55kW at 984 RPM. Our capacity table is based on NH3. For all the other specs (if available), see the picture of the manufacturer model plate or the attached pdf file. *Why choose for HOSBV? Were not only the largest used refrigeration specialist in Europe, but also, we deliver all equipment including an extensive test, warranty and industrial cleaning. *Optional we can also perform a new paint job and arrange the logistics.



Model	Number of cylinders	Swept volume at 1500 rpm m³/h	Swept volume at 1800 rpm m³/h	RT21 *				Unit dimensions in mm			Weight excluding motor kg	Sound pressure level at 1500 rpm dB(A)	Sound pressure level at 1800 rpm dB(A)		
				Nominal capacities in kW at 1500 rpm		Nominal capacities in kW at 1800 rpm		L	W	H					
				Single-high-stage	Booster	Single-high-stage	Booster								
				-10/+35°C	0/+40°C	-10/+35°C	0/+40°C								
SAC 104 S	4	226	271	127	195	35	153	226	42	2205-2865	1213	1229	1195	79	82
SAC 104 L	4	283	339	165	250	47	198	300	57	2205-2865	1213	1229	1225	80	83
SAC 104 E	4	339	N/A	203	306	58	N/A	N/A	N/A	2205-2865	1213	1229	1220	80	83
SAC 106 S	6	339	407	191	293	53	229	352	64	2286-2890	1267	1247	1380	81	83
SAC 106 L	6	424	509	247	375	71	297	450	85	2286-2890	1267	1247	1400	82	84
SAC 106 E	6	509	N/A	304	469	87	N/A	N/A	N/A	2286-2890	1267	1247	1400	82	84
SAC 108 S	8	482	542	285	381	71	306	480	85	2302-2915	1267	1247	1380	82	84
SAC 108 L	8	586	679	320	500	94	306	650	112	2311-2915	1267	1247	1610	82	85
SAC 108 E	8	679	N/A	406	612	116	N/A	N/A	N/A	2311-2915	1267	1247	1610	83	85
SAC 112 S	12	679	814	382	586	106	459	703	127	3279-3887	1475	1448	2255	83	85
SAC 112 L	12	848	1018	495	750	141	553	900	169	3279-3887	1475	1448	2280	83	86
SAC 112 E	12	1018	N/A	609	938	173	N/A	N/A	N/A	3279-3887	1475	1448	2330	83	86
SAC 116 S	16	905	1086	530	782	141	611	938	170	3329-3717	1536	1445	2505	84	86
SAC 116 L	16	1131	1387	619	1000	188	791	1200	226	3329-3717	1536	1445	2535	84	87
SAC 116 E	16	1387	N/A	812	1224	231	N/A	N/A	N/A	3329-3717	1536	1445	2590	84	87